

L I M E S T O N E





Chestnut Brown (Brushed)
12" x 12" x $\frac{3}{8}$ ", 16" x 16" x $\frac{3}{8}$ "



Gascogne Blue (Honed)
12" x 12" x $\frac{3}{8}$ ", 16" x 16" x $\frac{3}{8}$ ", 12" x 24" x $\frac{3}{8}$ ",
24" x 36" x $\frac{3}{4}$ ", Slab



Seagrass (Honed)
12" x 12" x $\frac{3}{8}$ ", 18" x 18" x $\frac{3}{8}$ ", 16" x 24" x $\frac{3}{8}$ ",
24" x 24" x $\frac{1}{2}$ ", Slab







London Grey
12" x 24" x 3/8" 16" x 16" x 3/8", Slab



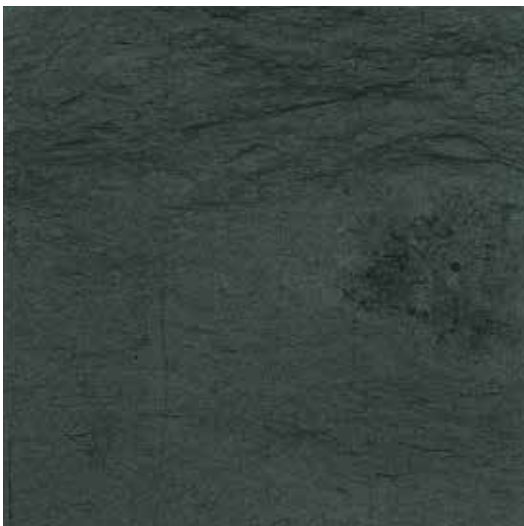
Beaumaniere Classic (Honed)
16" x 16" x 5/8", 24" x 24" x 3/4", Slab



Lagos Azul (Honed)
12" x 12" x 3/8", 16" x 16" x 1/2", Slab



Beaumaniere Light (Honed)
16" x 16" x 5/8", 12" x 24" x 5/8", Slab



Flannel (Brushed)
12" x 12" x 3/8", 16" x 16" x 3/8"



Lagos Gold (Honed)
18" x 18" x 5/8"







Both pages Floor: London Grey 16" x 16". Custom Floor Pattern: London Grey 16" x 16", Lagos Azul 16" x 16" and Calacata Luna Marble 18" x 18" Honed. Stair: London Grey Slab.





Paloma (Honed)
18" x 18" x 3/8", Slab



Porto Beige® (Honed)
12" x 12" x 3/8", 16" x 16" x 3/8", 24" x 24" x 3/4", Slab



Alhambra (Honed)
12" x 12" x 3/8", 16" x 16" x 3/8", 24" x 24" x 3/4", Slab



Gascogne Beige (Honed)
12" x 12" x 3/8", 16" x 16" x 3/8", 24" x 36" x 3/4", Slab



Antium Limestone
12" x 24" x 3/8"



Medina Stone (brushed)
12" x 24" x 3/8", 24" x 24" x 1/2"

Reminiscent of the creamy antique English limestone found in abodes both humble and grand, Cotswold Cream boast hues that range from creamy ivory to golden linen. Hand pillowed and slightly distressed at the edges, Cotswold Cream will lend authentic elegance to any interior.



Cotswold Cream – 12" x 24" x 1/2", 16" x 24" x 1/2"
Honed and pillowed with gently rusticated edges.

The epitome of luxurious flooring, the Versailles pattern is hand crafted from our exclusive French Limestone, and is a Walker Zanger classic.



Versailles Pattern in Beaumaniere Classic – Composed of 9 different tile sizes, – Thickness $\frac{3}{4}$ "
Honed surface with pillowed edges.

These splendid paving stones originate in the Bordeaux region of France, renowned for its limestone chateaux surrounded by prized vineyards. Local quarries yield blocks of grey, gold, cream and buff stone that are then selected and worked to our exacting specifications.



Bordeaux Pavers – 8" x 12", 8" x 16", 8" x 24", all sizes $\frac{3}{4}$ " thick – Sold as a pattern only.
Antiqued surface with rustic edges.



USAGE GUIDE FOR LIMESTONE TILE PRODUCTS

Type of Product	Durability/Application	Variation	Special Notes
LIMESTONE TILE			
Alhambra	Medium Duty	Limited Variation	☒ ☒ ☒ ☒ •
Antium	Medium Duty	Moderate Variation	☒ ☒ ☒ ☒ •
Beaumaniere Classic	Medium Duty	Moderate Variation	☒ ☒ ☒ ☒ •
Beaumaniere Light	Medium Duty	Moderate Variation	☒ ☒ ☒ ☒ •
Chestnut Brown	Medium Duty	Wide Variation	☒ ☒ • • Not recommended for exterior use or showers
Flannel	Medium Duty	Limited Variation	☒ ☒ ☒ ☒ •
Gascogne Beige	Heavy Duty	Limited Variation	☒ ☒ ☒ ☒ •
Gascogne Blue	Heavy Duty	Limited Variation	☒ ☒ ☒ ☒ •
Lagos Azul	Medium Duty	Moderate Variation	☒ ☒ ☒ • • Not recommended for exterior use or showers
Lagos Gold	Heavy Duty	Wide Variation	☒ ☒ ☒ ☒ •
London Grey	Heavy Duty	Moderate Variation	☒ ☒ ☒ ☒ •
Medina	Medium Duty	Moderate Variation	☒ ☒ ☒ ☒ •
Paloma	Medium Duty	Limited Variation	☒ ☒ ☒ ☒ •
Porto Beige	Heavy Duty	Moderate Variation	☒ ☒ ☒ ☒ •
Seagrass	Heavy Duty	Moderate Variation	☒ ☒ ☒ ☒ •
LIMESTONE PATTERNS			
Bordeaux Pavers	Heavy Duty	Antique Variation	☒ ☒ ☒ •
Cotswold Cream	Medium Duty	Antique Variation	☒ ☒ ☒ •
Versailles Beaumaniere	Medium Duty	Moderate Variation	☒ ☒ ☒ •

KEY TO USAGE GUIDE FOR NATURAL STONE PRODUCTS

Durability Codes

The following codes provide a general guide for the appropriate application of Walker Zanger stock stone products pictured in this catalogue. Please discuss your specific application environment with a sales representative before finalizing your selections.

Light Duty – These stones are suitable for most interior residential uses with the exception of steam showers. They are not generally recommended for commercial paving applications, but are appropriate for very light use commercial interior vertical applications.

Medium Duty – These stones are intended for use in all interior residential applications, including countertops**, patio areas* and flooring. These stones are also appropriate for many commercial applications such as light traffic*** interior flooring and exterior* and interior vertical applications.

Heavy Duty – These stones are extremely hard, making them suitable for all light and medium duty applications as well as most interior and exterior* commercial applications. Recommended uses include heavy traffic*** residential and commercial flooring and other areas that require maximum durability.

Architects and Designers please note: Contact a Walker Zanger Architectural Sales Representative to ensure material suitability before making final specifications for commercial projects.

* Some Medium and Heavy Duty stones cannot be used in exterior applications in areas that experience freeze/thaw conditions. Please see specific stone in Usage Guide for this information.

** Some Medium Duty stones may be subject to scratching or etching when used as countertops. Please see note about Stone Countertops located in the left column of this page.

*** Light, Medium and Heavy traffic refer to pedestrian traffic only. If stone is to be installed in an area with vehicular traffic, please contact a Walker Zanger Architectural Sales Representative to inquire about thickness and installation requirements.

Variation and Uniformity Codes

Natural stones are products of nature, and no two pieces are exactly alike. These codes are intended as a general guide to how much variation in color, movement and veining can be expected in the stone products that appear in this catalogue.

Please note: All natural stones have unique natural variations and inclusions that are impossible to show in a photograph or sample. For this reason, all stone tile and slabs should be unpacked and inspected prior to installation, as Walker Zanger cannot accept claims for variation in any stone after installation.

- Limited Variation** – Stones in this category are relatively uniform in background color, veining and movement.
- Moderate Variation** – These stones exhibit some variation in background color, veining and movement. Blending these materials during installation is strongly recommended to ensure satisfactory results.
- Wide Variation** – Stones in this category exhibit a wide range of variation in color, veining and movement. Blending these materials during installation is required to ensure satisfactory results.
- Antique Variation** – These stones are tumbled or otherwise distressed and will exhibit exaggerated color variation, uneven or chipped edges and possible variation in size and thickness. Blending these materials during installation is required to ensure satisfactory results.

KEY TO SYMBOLS

☒ Not recommended in areas that experience frequent wet conditions (such as showers), unless sealed as a normal maintenance procedure. If used for shower floors, must include water-proof membrane on substrate prior to tile installation.

☒ May contain areas of open or dry seams that can appear dull in reflective

light. This is not a defect, but rather an inherent characteristic of the stone.

☒ Must be installed with water-free epoxy thin-set. Do not use any setting material in which water must be used.

☒ White thin-set or mortar is required. This is the case for all limestones, tumbled stones, "antiqued stones" and light colored marbles.

☒ May be characterized by dry seams, pits, fossils and glass veins. In polished and honed stones, these areas are often filled at the factory. In rustic or tumbled stones as well as with some honed limestones, these are often filled with grout during installation. Whether filled at the factory or during installation, the fill can work its way out of

the voids. In these instances, it may be necessary to refill these voids as part of a normal maintenance procedure.

☒ May be used outside in areas that experience freeze/thaw conditions. Contact your Walker Zanger sales representative for installation guidelines.

• Not recommended for use in pools, and spas.