

WEAVE™





Weave Stix Field  
1/2" x 4", 3/4" x 4", 1" x 4"



Montage Pattern Field  
1" x 1", 1" x 2" and 1" x 4" Mosaic



Offset Field  
1" x 4" Mosaic

A union of clean, linear geometry and the unpredictable art of hand poured glass, Weave Glass finds it's beauty in the meeting of contrasts, creating a unique Zen Modern sensibility. The shimmering colors of Weave glass take their cue from nature, evoking air, earth and water in muted tones of autumn gold, sea green, ocean blue, and metallic bronze. Each color is finished with an iridescent patina, giving the surface of the glass a visual dimension that shifts endlessly with the play of light and shadow.



White



Shadow



Oxygen



Clear



Sandstone



Cane

All available styles are not stocked in all standard Weave colors and blends. See [walkerzanger.com](http://walkerzanger.com) for details.  
Non stock items are available by special order. Walker Zanger Sales Associates can provide details on special order lead times and pricing.  
**Left page** Weave Stix Sterling Blend.







Equator



Harvest



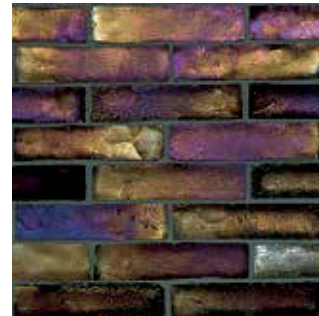
Summer Blend



Water Blend



Lake Blend



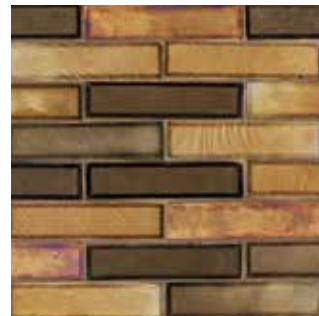
Bronze



Bamboo Blend



Teak Blend



Tea House Blend



Pewter



Bali Blend

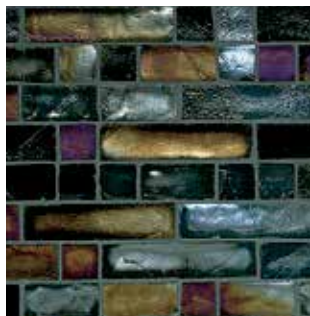


Golden Truffle Blend





Bamboo Blend



Moroccan Blend



Sandstone



Draper Field



Grove Blend



Pacific



Platinum



Reef Blend



Shadow



Sterling Blend



White



Cascade Blend

Type of Product	Durability/Application	Variation	Special Notes
<b>GLASS</b>			
<b>WEAVE</b>	Heavy Duty	Handcrafted Variation	Color will vary from one production lot to another. Weave Glass Tile has special installation instructions that differ from ceramic tile. Please see that your contractor reviews the Weave Glass installation guide before beginning installation. Installation guidelines are in the product boxes as well as at <a href="http://www.walkerzanger.com">www.walkerzanger.com</a>