

WALKER ZANGER™

GUBI



Large Format Porcelain & Ceramic Tiles

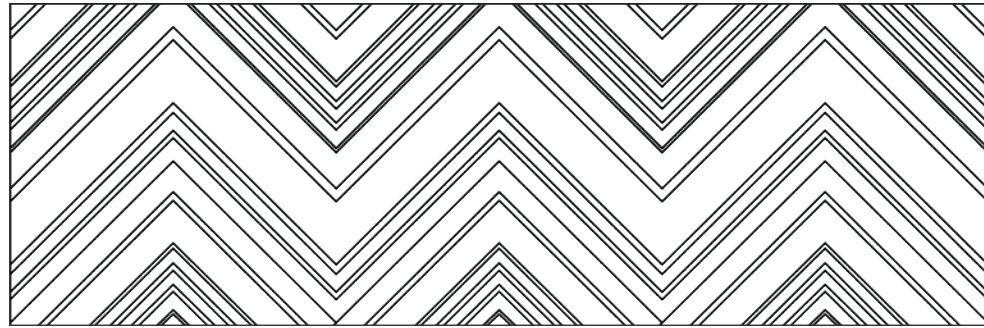
GUBI

Bring minimalist textural beauty to your walls with the Gubi collection. Featuring five contemporary patterns in four neutral shades, Gubi fascinates with its carved stone-like irregularity and subtly weathered, natural finish. A practical tile collection that brings character and charm to any space.





PEAK



| SIZE | THICKNESS | SF/PIECE | MATERIAL | FINISH |
|-----------|-----------|----------|----------|---------|
| 12" x 36" | 3/8" | 2.8818 | Ceramic | Natural |

RECOMMENDED USAGE



Residential Interior Wall



Residential Exterior Wall



Commercial Interior Wall



Commercial Exterior Wall



Fireplace Surround



Shower Wall

LIGHT PEAK
1GUBSPE1236



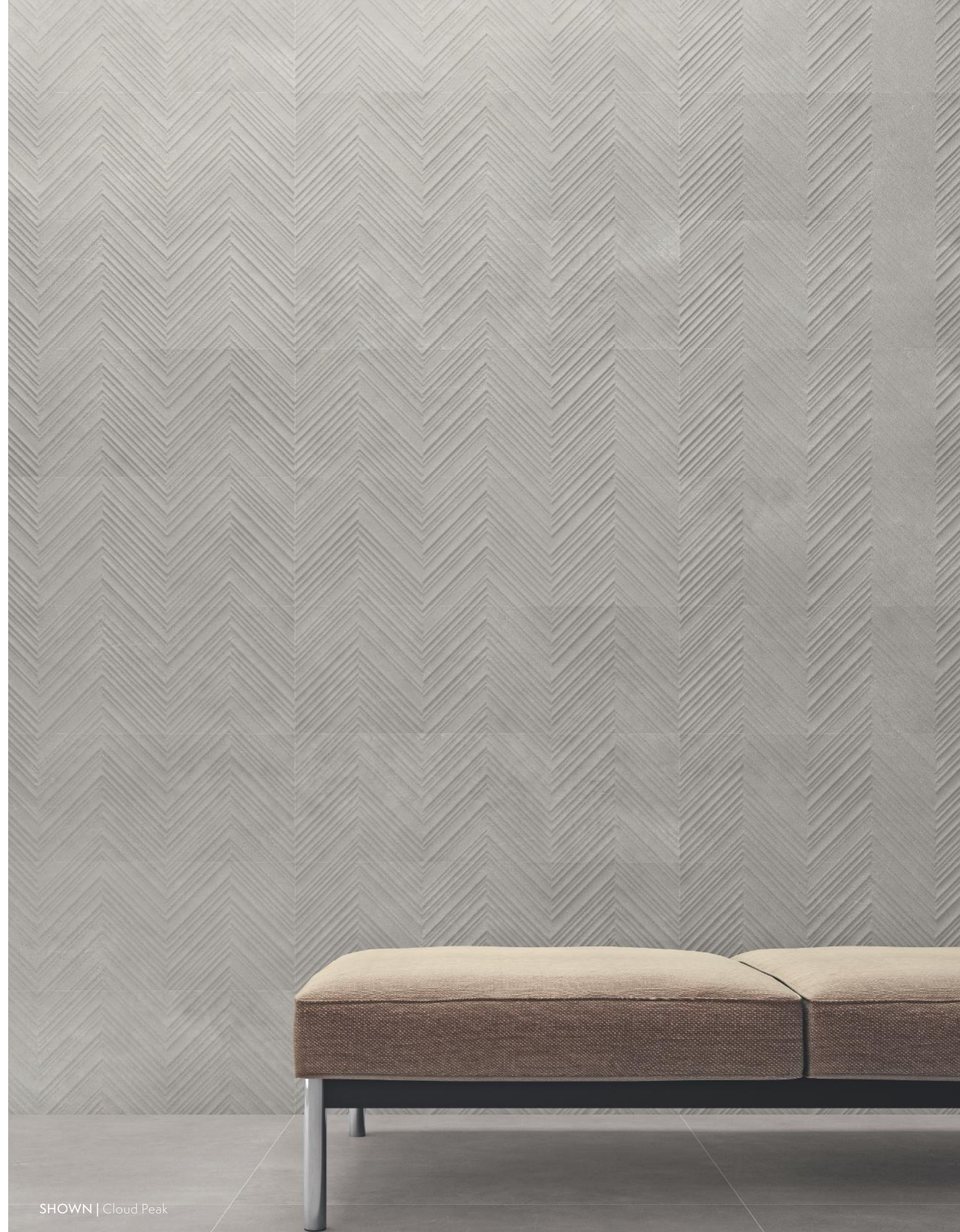
CLOUD PEAK
1GUBCPE1236



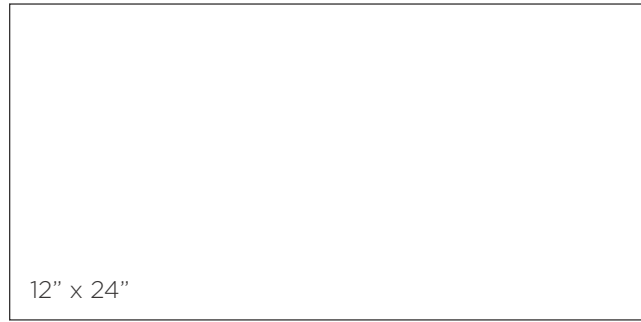
ANTHRACITE PEAK
1GUBAPE1236



TAUPE PEAK
1GUBTPE1236



SHOWN | Cloud Peak



| SIZE | THICKNESS | SF/PIECE | MATERIAL | FINISH |
|-----------|-----------|----------|-----------|---------|
| 12" x 24" | 3/8" | 1.9198 | Porcelain | Natural |

56 faces available for each 12" x 24" field tile

RECOMMENDED USAGE



Residential Interior Wall



Residential Exterior Wall



Residential Interior Floor



Commercial Interior Wall



Commercial Exterior Wall



Commercial Interior Floor*



Commercial Exterior Floor*



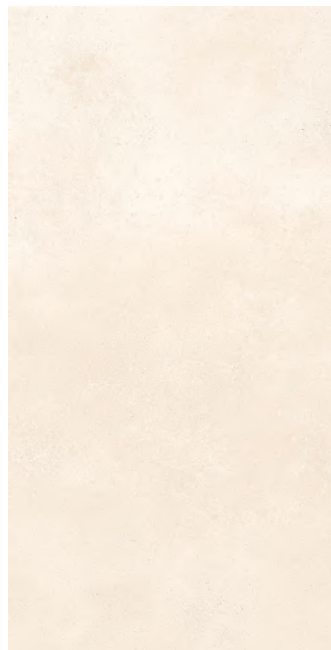
Fireplace Surround



Shower Wall



Steam Shower Wall



LIGHT 12" x 24"
NATURAL
1GUBSANNT12X24



CLOUD 12" x 24"
NATURAL
1GUBCLONT12X24



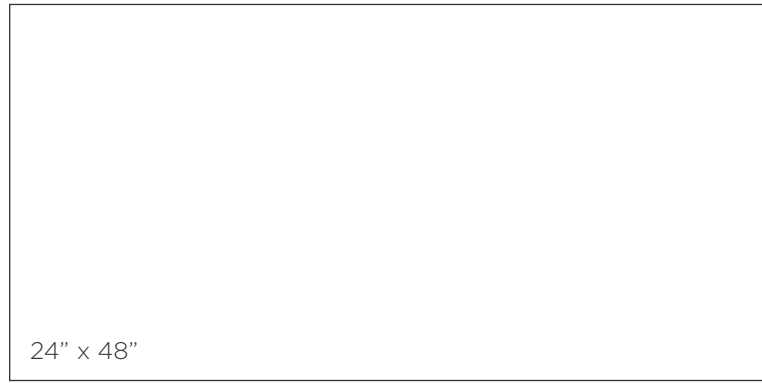
ANTHRACITE 12" x 24"
NATURAL
1GUBANTNT12X24



TAUPE 12" x 24"
NATURAL
1GUBTAUNT12X24



SHOWN | Light 12" x 24" Natural (Floor)



24" x 48"

| SIZE | THICKNESS | SF/PIECE | MATERIAL | FINISH |
|-----------|-----------|----------|-----------|---------|
| 24" x 48" | 3/8" | 7.750 | Porcelain | Natural |

14 faces available for each 24" x 48" field tile

RECOMMENDED USAGE



Residential Interior Wall



Residential Exterior Wall



Residential Interior Floor



Commercial Interior Wall



Commercial Exterior Wall



Commercial Interior Floor*



Commercial Exterior Floor*



Fireplace Surround



Shower Wall



Steam Shower Wall



FROST RESISTANT



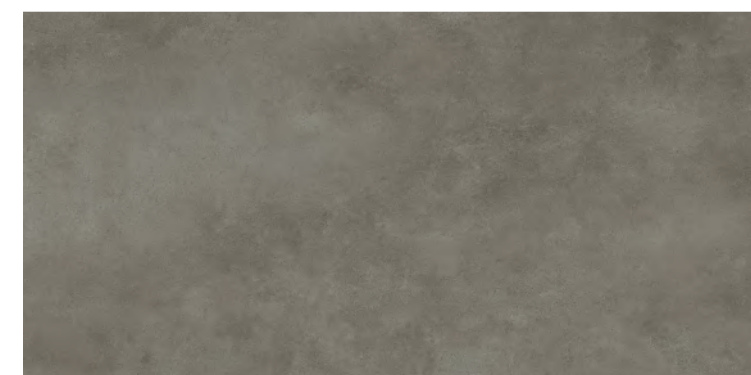
LIGHT 24" x 48" NATURAL
2448POTGRNCNARGLIGNA



CLOUD 24" x 48" NATURAL
2448POTGRNCNARGCLDNA



ANTHRACITE 24" x 48" NATURAL
2448POTGRNCNARGANTNA

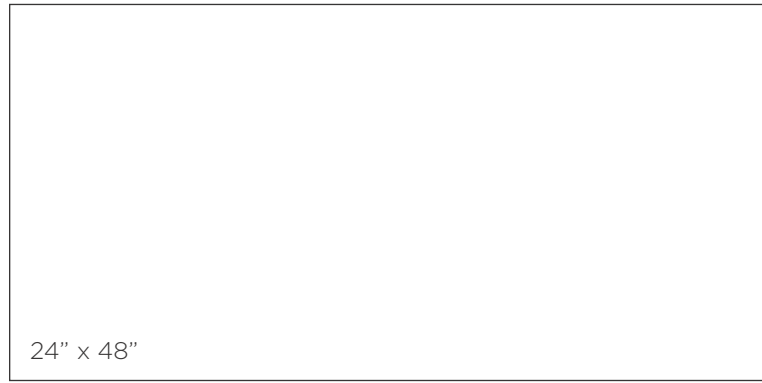


TAUPE 24" x 48" NATURAL
2448POTGRNCNARGTPENA



SHOWN | Anthracite 24" x 48" Natural

Recommended for light commercial floor usage only. Gubi 24"x48" natural field tiles are not recommended for shower floors or residential exterior floors.



| SIZE | THICKNESS | SF/PIECE | MATERIAL | FINISH |
|-----------|-----------|----------|-----------|-----------|
| 24" x 48" | 3/8" | 7.750 | Porcelain | Anti-Slip |

RECOMMENDED USAGE



Residential Interior Wall



Residential Exterior Wall



Residential Interior Floor



Residential Exterior Floor



Commercial Interior Wall



Commercial Exterior Wall



Commercial Interior Floor



Commercial Exterior Floor



Fireplace Surround



Shower Floor



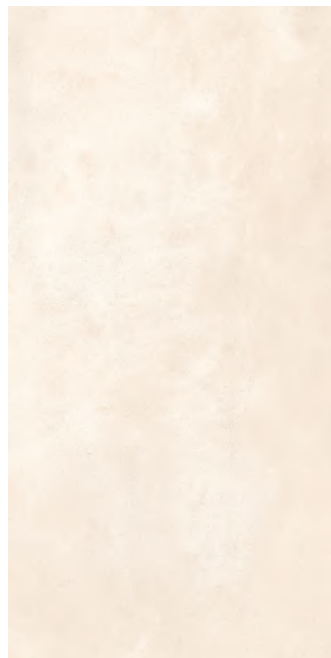
Shower Wall



Steam Shower Floor

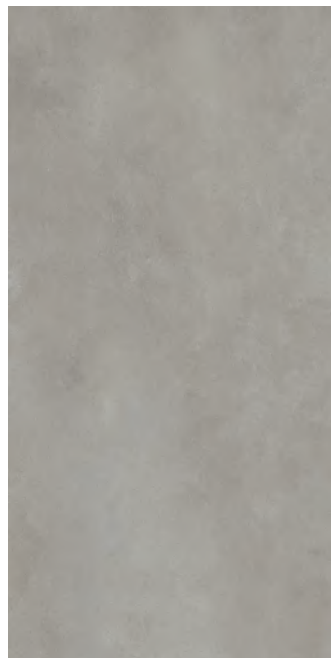


Steam Shower Wall



LIGHT 24" x 48"
ANTI-SLIP

2448POTGRNCNARGLIGOD



CLOUD 24" x 48"
ANTI-SLIP

2448POTGRNCNARGCLDOD



ANTHRACITE 24" x 48"
ANTI-SLIP*

1GUBANTAS24X48



TAUPE 24" x 48"
ANTI-SLIP*

1GUBTAUAS24X48



SHOWN | Cloud 24" x 48" Anti-Slip

RECOMMENDED USAGE



Residential Interior Wall



Residential Exterior Wall



Residential Interior Floor



Residential Exterior Floor



Commercial Interior Wall



Commercial Exterior Wall



Commercial Interior Floor



Commercial Exterior Floor



Fireplace Surround



Pool & Spa



Shower Floor



Shower Wall

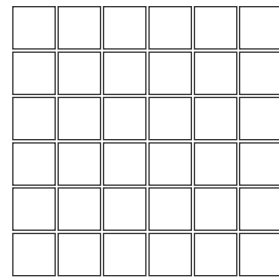


Steam Shower Floor



Steam Shower Wall

2" x 2" MOSAIC

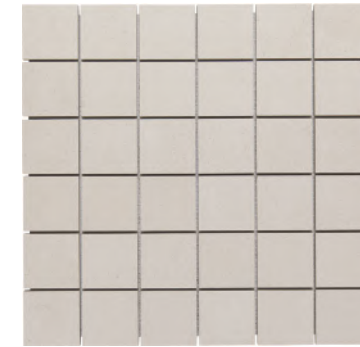


| SIZE | THICKNESS | SF/PIECE | MATERIAL | FINISH |
|-----------|-----------|----------|-----------|---------|
| 12" x 12" | 3/8" | 0.956 | Porcelain | Natural |

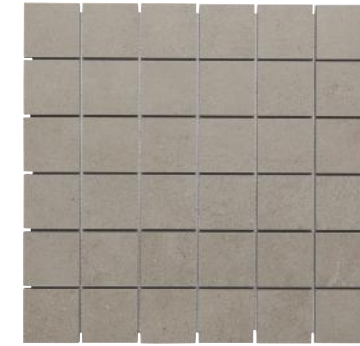
MEDIUM
V3 COLOR
VARIATION



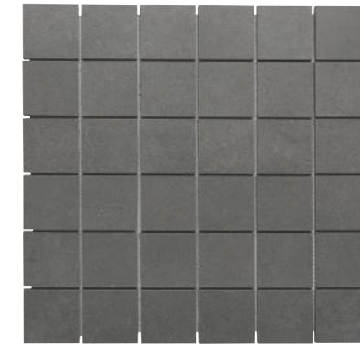
FROST
RESISTANT



LIGHT 2" x 2" MOSAIC
1GUBSANBLONTMO



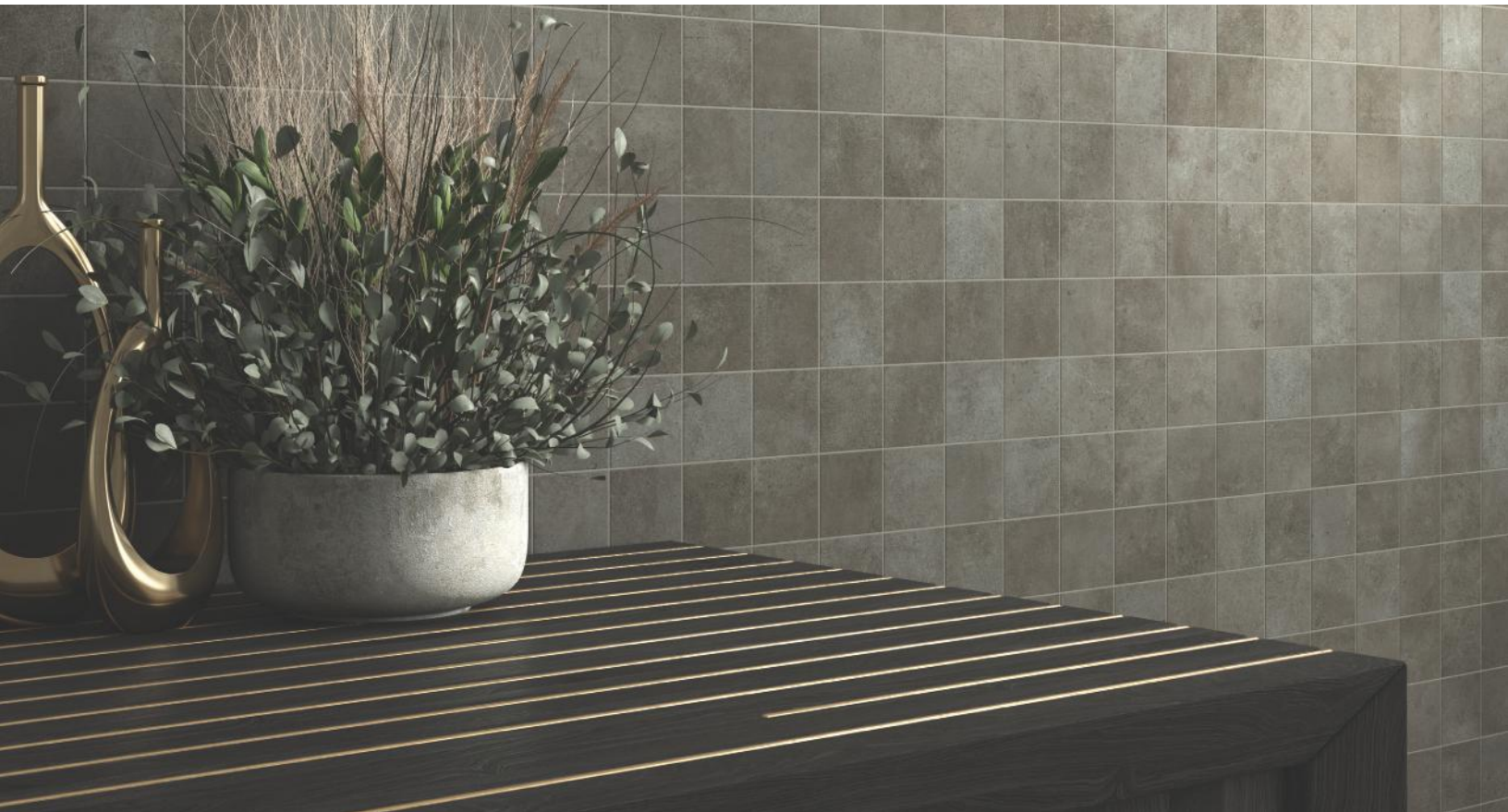
CLOUD 2" x 2" MOSAIC
1GUBCLOBLONTMO



**ANTHRACITE
2" x 2" MOSAIC**
1GUBANTBLONTMO



TAUPE 2" x 2" MOSAIC
1GUBTAUBLONTMO



WALKER ZANGER™

CALIFORNIA | GEORGIA | NEVADA | NEW YORK | NORTH CAROLINA | TEXAS

WALKERZANGER.COM