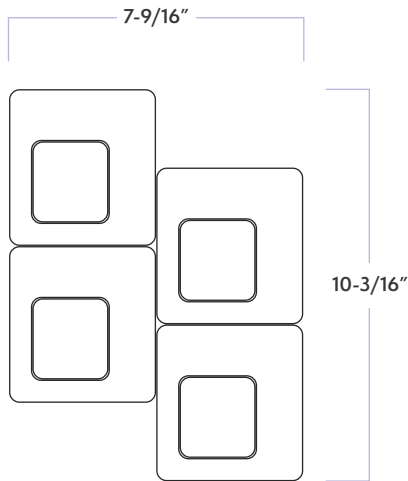


# Stardust Link

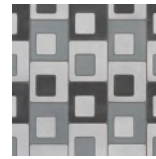
DATE REVISED: JUNE 2024

# WALKER ZANGER

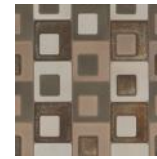


MATERIAL	Glazed basaltic lava rock
FINISH*	Crackle/Gloss/Metallic
THICKNESS	3/8"
SHEET SIZE	8-1/16" x 17-9/16"
COVERAGE SQFT/PIECE	0.4234 SqFt
MOUNTING	Mesh

#### AVAILABLE COLORS



Twilight  
Crackle/Gloss Finish



Solar  
Gloss/Metallic Finish



Midnight  
Metallic Finish

#### RECOMMENDED USAGES



Commercial  
Interior Wall



Residential  
Exterior Wall



Residential  
Interior Wall



Residential  
Exterior Floor



Residential  
Interior Floor



Shower Wall

#### MATERIAL DATA



LOW  
V1 Color Variation



Frost Resistant

#### MAINTENANCE-



Sealing is required\*



In areas that experience moisture, re-sealing is a necessary maintenance procedure

#### ADDITIONAL NOTES

Sealing is required for Stardust Link mosaics. Stardust Link mosaics feature natural stone products. We recommend sealing all natural stone products with a penetrating sealer and sealing all porous non-polished stone (limestone, tumbled marble, etc.) prior to grouting. This prevents grout from staining or affecting the color of the stone. To accentuate crackle, grout with a darker color and seal tile after grouting. To minimize crackle, seal tile prior to grouting. For areas that experience moisture, re-sealing is a necessary maintenance procedure. Stone is a natural product, and care should be taken to protect it from harsh abrasive cleaners and abrasive cleaning tools. For further questions/information about additional usages, please consult with your installer.

**Stardust  
Link**

DATE REVISED: JUNE 2024

