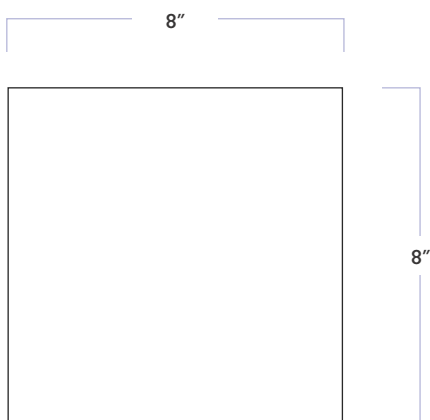


Duquesa™ Cement

8" x 8" Field

DATE REVISED: OCTOBER 2024

WALKER ZANGER

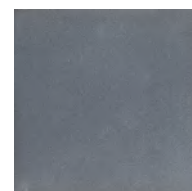


MATERIAL	Cement
FINISH	Matte
THICKNESS	5/8"
SIZE	8" x 8"
COVERAGE SQFT/PIECE	0.4445
MOUNTING	Loose

AVAILABLE COLORS



Crema



Mezzanotte

RECOMMENDED USAGES



Commercial
Exterior Floor



Commercial
Exterior Wall



Commercial
Interior Floor



Commercial
Interior Wall



Residential
Exterior Floor



Residential
Exterior Wall



Residential
Interior Floor



Residential
Interior Wall



Shower Floor*



Shower Wall*

MATERIAL DATA



V1 Color Variation

MAINTENANCE



Sealing is required prior to grouting



Damp cloth and a gentle non-acidic soap

ADDITIONAL NOTES

Must be sealed prior to and after the grouting process. Dark grouts may stain the surface of the tile. May show discernible color changes when used in wet applications. For installation on shower floors and walls, please refer to TCNA guidelines and consult with your installer for proper waterproofing and sealing requirements. For further questions/information about additional usages, please consult with your installer.

Duquesa™ Cement
8" x 8" Field

DATE REVISED: OCTOBER 2024

